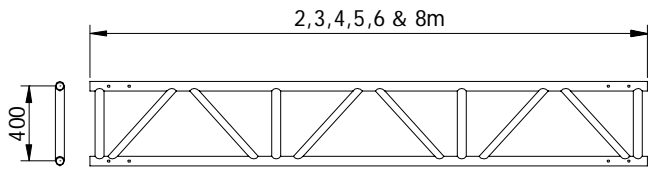


Technical Data

1.0 PRODUCT



Length (m)	Part Number	Weight(kg)
2	20012000	9.5
3	20013000	14.1
4	20014000	18.7
5	20015000	23.2
6	20016000	27.8
8	20018000	37.0

2.0 GEOMETRY

Overall depth: 448.3mm
 Overall width: 48.3mm

3.0 MEMBERS

	<u>Element</u>	<u>Cross section</u>	<u>Material</u>
Chords:	Upper	CHS 48.3mm	6082 T6
	Lower	CHS 48.3mm	6082 T6
Diagonals:	All	CHS 38.1mm	6082 T6
Struts:	All	CHS 48.3mm	6082 T6

4.0 PROPERTIES

4.1 MATERIALS

Designation:	Alloy 6082 T6
E:	70000 N/mm ²
W:	2710 Kg/m ³
G:	26600 N/mm ²
COE:	23x10 ⁻⁶ per °C

4.2 BEAM

Weight:	4.5 Kg/m
Area:	12.32 cm ²
Iyy:	4957.860 cm ⁴
Izz:	29.860 cm ⁴
J:	4987.720 cm ⁴

5.0 PERFORMANCE

		<u>Lateral restraint interval(m)</u>
Permissible moment:	19.60 KNm	1.0
	11.40 KNm	1.5
	7.10 KNm	2.0
Permissible shear force :	17.10 KN	