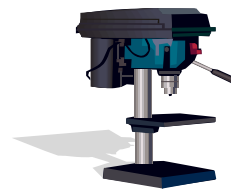


Description

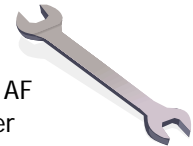
XTENDA Intermediate Transom Tube Conversion Kit

The ASP tube conversion kit enables regular 4mm wall thickness scaffold tubes to be converted into extendable intermediate transoms. Two options exist enabling an additional 2 or 3 inside boards to be created. The number of inside boards can then be modified to either 2,1,0 or 3,2,1,0, depending on model, without releasing the couplers securing the transom.

Tools required

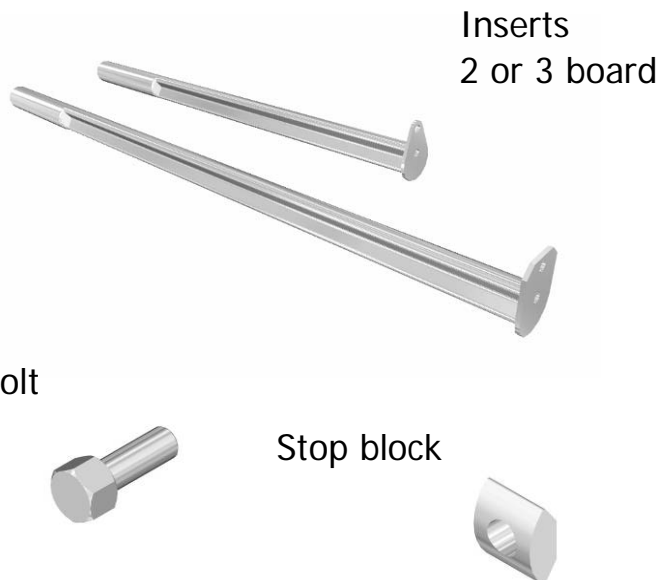


Pillar drill with
13mm drill bit



21mm AF
spanner

Components



Kits:-

XITCK Model 2

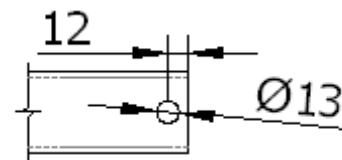
Includes: 2 Board insert+Bolt+Stop block
Weight: 2.1 kg

XITCK Model 3

Includes: 3 Board insert+Bolt+Stop block
Weight: 2.8 kg

Installation

1. Drill 13mm hole through one side of tube 12mm in from one end.



2. Slide a 2 or 3 board insert halfway into drilled tube with the V slot facing towards the hole. Place the stop block onto the insert and continue sliding in until the hole in the stop block and the hole in the drilled tube line up. Install the bolt, push in the insert fully and tighten bolt.



Safe use

Insert Type	Number of transoms per 13' board	Nominal centres	Max load allowable platform load	Equivalent BSEN 128 11 Load Class
	(No)	(m) - (inches)	(kN/m ²)	
2 Board	4	(1.2m) - (48')	5.6	Class 5
2 Board	6	(0.72m) - (36')	9.4	Class 6
3 Board	4	(1.2m) - (48')	2.5	Class 3
3 Board	6	(0.72m) - (36')	4.3	Class 4

