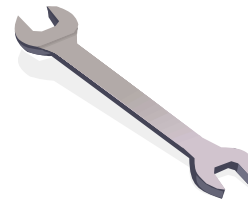


Description

UBIX Aluminium eaves beam 45cm and 78cm.

A new aluminium eaves beam has been introduced to suit ASP Specialist Series beams, this can be used as an option for sheet termination at the eaves on the UBIX roofing system. The new eaves beams are designed for 18 degree sloping roofs and are available to suit both 78cm and 45cm deep beams. The new eaves beam offers enhanced aesthetics and eliminates any gaps at the eaves.

Tools required



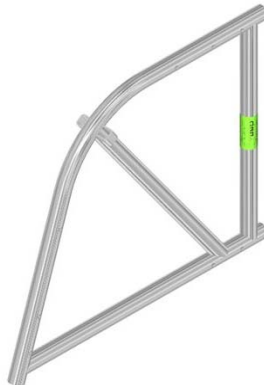
21mm AF spanner for removal of M12x60 bolts if required

Components

Eaves beam assembly



Eaves beam



Part details:-

- 16011845, Aluminium eaves beam 18 degreesx45cm
- 16021845, Aluminium eaves beam assembly 18 degreesx45cm
- 16011878, Aluminium eaves beam 18 degreesx78cm
- 16021878, Aluminium eaves beam assembly 18 degreesx78cm

Assembly Parts 45cm beam:

- 16011845, Aluminium eaves beam 18 degreesx45cm
- 16101845, Eaves keder track for 18 degreesx45cm
- 20070001, Beam spigots x 2
- 30081260, M12x60 Bolt with locking nut x 4
- 30091270, M12x70 quick release pin x 2

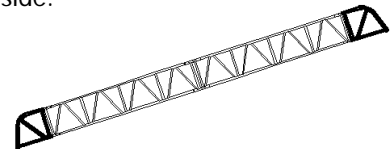
Assembly Parts 78cm beam:

- 16011878, Aluminium eaves beam 18 degreesx78cm
- 16101878, Eaves keder track for 18 degreesx78cm
- 20070001, Beam spigots x 2
- 30081260, M12x60 Bolt with locking nut x 4
- 30091270, M12x70 quick release pin x 3

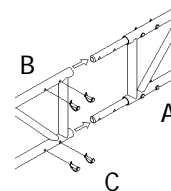
Installation



1. Duo pitch, vertical tracking at eaves each side. Beams closed each side.



2. Mono pitch, vertical tracking at eaves one side. Beams closed each side.



Connection to Specialist Series beams
 A - 0.45m or 0.78m eaves beam assembly
 B - Specialist beam 0.45m or 0.78m
 C - Quick release pins M12x60

Technical Data

45cm eaves beam:

Safe moment=20kNm
 Safe shear load=21kN
 Assembly weight=9.4kg

78cm eaves beam:

Safe moment=40.1kNm
 Safe shear load=30.2kN
 Assembly weight=11.6kg